

LWVC Convention



Call to Order

**Helen
Hutchison**
President
LWV Oakland



Join Us on Social Media

Please use this hashtag on Facebook,
Twitter, and Instagram:

#LWVC2017

And tag us:

@LWVC

We'll be sharing the post of the day
at morning plenary!



Social Media Moment



Via LWV Los Angeles
Twitter: Our
@lwwlosangeles leaders
with @AlexPadilla4CA at
@LWVC Convention
#lwvc2017



Credentials

Jeanne Brown

LWVC Director,

LWV San Diego



Financial Report

Jacquie Canfield
LWVC Treasurer
LWV Fresno



LWVC/LWVCEF Financial Report

- IRS completed audit on LWVCEF 2014/15 -found in compliance 😊
- Reestablishment of Finance and Audit Committee
- Finance Committee
 - Suzi Baker, LWV Sacramento
 - Michelle Dennis, LWV Los Angeles
 - Katherine Gavzy, LWV Oakland
 - Helen Hutchison, President
 - Melissa Breach, Executive Director
 - Jacquie Canfield, Treasurer
- Monthly reviews financial reports of LWVC/LWVCEF
- Research and recommended Operating Reserve Policy
- Budget committee for 2017/19 proposed budget



LWVC/LWVCEF Financial Report

- Audit Committee
 - Members
 - Marjorie Bailey (LWV San Francisco)
 - Wanda Ginner (LWV South San Mateo County)
 - Elizabeth Wall Ralston (LWV Los Angeles)
 - Reviews 990 financial reports of LWVC/LWVCEF
- Other Items Worth Noting
 - LWVCEF custodian for 32 local Leagues funds
 - State does not charge for this service
 - Liability Insurance reduced 70% in 2015/16
 - Lower Level continues



LWVC/LWVCEF Financial Report

(in Thousands)	2014/15	2015/16	Proj. 2016/17
Total Income	\$ 452	\$ 326	\$ 384
Total Expense	\$ 493	\$ 356	\$ 358
Net Income/(Loss)	\$ (41)	\$ (30)	\$ 25
Beginning Balance	\$ 133	\$ 92	\$ 62
Ending Balance	\$ 92	\$ 62	\$ 88
Ending Balance Components			
Unrestricted	\$ 92	\$ 62	\$ -
Operating Reserve	\$ -	\$ -	\$ 88

– 2014/15

- Higher convention costs

– 2015/16

- Loss of National contract for LEW

– 2016/17

- Additional election fundraiser
- Higher utilization of Restricted funds



LWVCEF Financial Report

(in Thousands)	2014/15	2015/16	Proj. 2016/17
Total Income	\$ 715	\$ 374	\$ 702
Total Expense	\$ 492	\$ 506	\$ 530
Net Income/(Loss)	\$ 223	\$ (132)	\$ 172

Beginning Balance	\$ 181	\$ 399	\$ 267
Ending Balance	\$ 399	\$ 267	\$ 439

Ending Balance Components

Unrestricted	\$ -	\$ 2	\$ -
Restricted	\$ 399	\$ 208	\$ 400
Board Designated	\$ -	\$ 57	\$ 39
Operating Reserve	\$ -	\$ -	\$ -

- 2014/15
 - Irvine Foundation 2 year grant
- 2015/16
 - Utilization of Irvine Foundation funds
 - Higher contributions for Voters Edge
 - Received bequest of \$57,000
- 2016/17
 - Irvine Foundation 2 year grant
 - Utilize Board Designated for New LEW



Budget Presentation

Jacquie Canfield
LWVC Treasurer
LWV Fresno



LWVC/LWVCEF

2017-19 Proposed Budget

Jacquie Canfield, Treasurer (Chair), LWVC
Suzi Bakker, LWV Sacramento County
Michelle Dennis, LWV Los Angeles
Katherine Gavzy, LWV Oakland
Helen Hutchison, President, LWVC (ex-officio)
Melissa Breach, Executive Director, LWVC



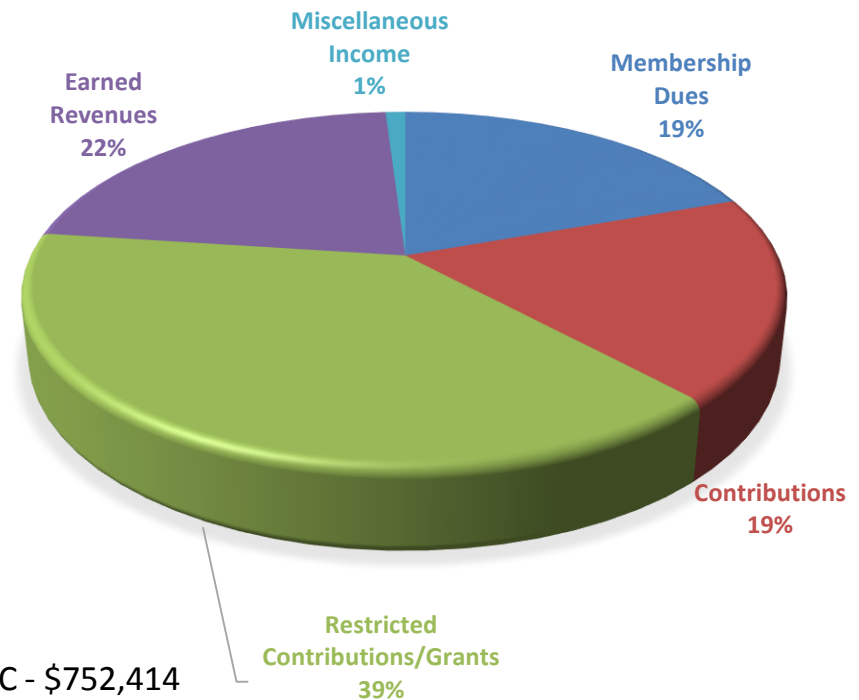
LWVC/LWVCEF 2017-19 Proposed Budget

- LWV of California – 501 (c) 4 (donations are not tax deductible)
 - Can advocate for changes based on League positions
- LWV of California Educational Fund – 501 (c) 3 (donations are tax deductible)
 - Must only do educational type activities
 - Voter education
 - Study issues to get informed
- Both entities work to achieve League goals
- Two-year budget is presented per LWVC by-laws to members
- LWVCEF budget is presented as information
 - Budget will be approved by LWVCEF board



LWVC/LWVCEF 2017-19 Proposed Operational Revenues

- Membership Dues
 - No PMP Increase and membership held constant
- Contributions
- Earned Revenues
 - LEW
 - County Support for Voters Edge
 - Convention
- Restricted Contributions/Grants
 - Irvine Foundation, Library Grant
- Miscellaneous
 - Rent Income, Publications/Merchandise, Interest



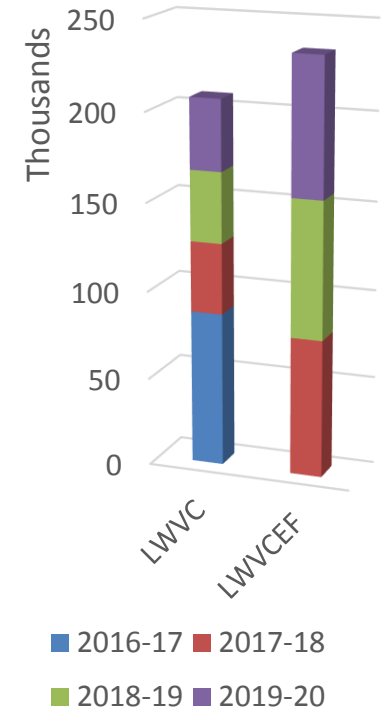
LWVC - \$752,414

LWVCEF - \$1,044,067 * *includes Irvine grant \$400,000



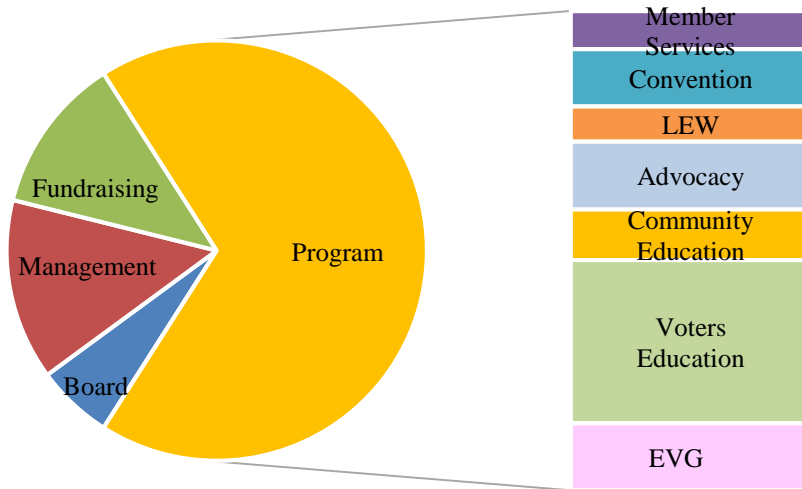
Building of Operational Reserves

- Budget includes line item “Build Reserves”
 - LWVC - \$80,000 - \$40,000 each year
 - LWVCEF - \$156,000 - \$78,000 each year
- Finance committee recommended a reserve policy
- Financial stability is important to ensure fulfillment mission, programs, and ongoing operations of the League
- Reserve Policy
 - Reserve equal to six month of operating expenses
 - Outlines when/how funds can be used and timeline to restore
 - Board will work on raising these funds over the next three years



LWVC/LWVCEF 2017-19 Proposed Expenses

LWVC/LWVCEF 2017-19 Proposed
Budget Major Activities



LWVC - \$735,224
LWVCEF - \$948,551

- Reducing operational costs
 - Moving office and other operational costs
- 70% of funds go towards program
- Member Services - Leadership Development workshops, MTA support for local Leagues, toolkits and training for local Leagues
- Convention
- League Easy Web (LEW) – Old and New
- Advocacy - Legislative committee, Action Alerts
- Community Education - Guide to Government, New Motor Voter Program
- Voters Education - Voter's Edge, Pros/Cons, Voter Choice Implementation (SB540), Easy Voting Guide



LWVC/LWVCEF 2017-19 Proposed Expenses

Functional View

Combined LWVC/LWVCEF 2017/19	Supporting Activities				Program Activities								Total Expenses
Proposed Expense Budget	Board	Management	Fundraising	Supporting Subtotal	Member Services	Convention	LEW	Advocacy	Community Education	Voters Education	EVG	Program Subtotal	Total Expenses
Salaries and Benefits	\$ 33,458	\$ 113,681	\$ 138,996	\$ 286,135	66,120	31,385	27,459	125,513	98,676	258,918	71,577	679,648	\$ 965,783
Travel	52,024	4,091	5,138	61,253	5,060	-	2,500	3,000	2,091	8,000	1,000	21,651	\$ 82,904
Services/Professional Fees	1968	73,275	10,655	85,899	4,632	102,084	38,384	17,328	5,095	78,052	28,887	274,461	\$ 360,359
Office and Occupancy	11,890	44,592	49,214	105,695	15,592	4,285	15,725	17,596	14,977	46,519	59,520	174,216	\$ 279,911
Total Activity Expenses	\$ 99,340	\$ 235,639	\$ 204,003	\$ 538,982	\$ 91,404	\$ 137,754	\$ 84,068	\$ 163,437	\$ 120,839	\$ 391,489	\$ 160,984	\$ 1,149,976	\$ 1,688,958



LWVC/LWVCEF 2017-19 Proposed Budget

Want more information?

- Budget Detail information Pages 78-83
- Budget Q & A sessions:
 - Saturday, June 3, 7:30 – 8:30am Location: Tofanelli Room
 - Saturday, June 3, 9:00 – 10:00pm Location: Beavis Room



LWVC Proposed 2017-19 Budget

League of Women Voters of California	Projected 2015/17	Proposed Budget 2017/19	Diff 2017/19 vs 2015/17	% Diff	Notes
Membership Dues	\$ 318,035	\$ 331,194	\$ 13,159	4%	PMP chg in 2016/17, PMP/membership same both years
Contributions	143,095	129,500	\$ (13,595)	-10%	One time donations received in 2015/16
Earned Revenues	223,667	283,400	\$ 59,733	27%	Implementation of New LEW in 2017/19
Misc. Inc.	25,316	8,320	\$ (16,996)	-67%	One time funds received in 2015/16
Operational Income Subtotal	\$ 710,113	\$ 752,414	\$ 42,301	6%	
Build Reserves		\$ 80,000	\$ 80,000	100%	Building Operational Reserves \$40,000 each year
Total Income	\$ 710,113	\$ 832,414	\$ 122,301	17%	
Salaries and Benefits	\$ 337,261	\$ 383,090	\$ 45,829	14%	Includes COLA, Merit Pay, Add hours for New LEW
Travel	38,402	\$ 43,560	\$ 5,158	13%	Reestablish Travel each budget year--not assuming savings
Services/Professional Fees	228,155	\$ 195,231	\$ (32,924)	-14%	Higher use of Ind. Contractor in 2015/16 for New LEW
Office and Occupancy	110,725	\$ 114,342	\$ 3,617	3%	Includes \$10k to move office to reduce costs
Total Expenses	\$ 714,543	\$ 736,224	\$ 21,681	3%	
Net Ordinary Income	\$ (4,430)	\$ 96,190	\$ 100,620		
Beginning Balance	\$ 91,973	\$ 87,543	\$ (4,430)		
Ending Balance	\$ 87,543	\$ 183,733	\$ 96,190		
Ending Balance Components					
Operational Reserve	\$ 87,543	\$ 167,543	\$ 80,000		
Undesignated Funds	\$ -	\$ 16,190	\$ 16,190		

LWVCEF Proposed 2017-19 Budget

League of Women Voters of California Education Fund	2015/17	2017/19	Diff 2017/19 vs 2015/17	% Diff	Notes
Membership Dues	\$ 15,751	\$ 18,800	\$ 3,049	19%	In Lieu of PMP payments
Contributions	\$ 248,964	\$ 205,600	\$ (43,364)	-17%	
Restricted Contributions/Grants	696,295	300,000	(396,295)	-57%	Irvine grant of \$400,000 received in 2016/17
Earned Revenues	100,985	110,000	9,015	9%	
Miscellaneous Income	15,962	9,667	(6,295)	-39%	
Operational Income Subtotal	\$ 1,077,957	\$ 644,067	(433,890)	-40%	
Build Reserves		\$ 156,000	\$ 156,000	100%	Building Operational Reserve \$78,000 each year
Total Income	\$ 1,077,957	\$ 800,067	(277,890)	-26%	
Salaries and Benefits	\$ 570,148	\$ 582,693	12,545	2%	Includes COLA, Merit Pay
Travel	41,718	37,253	(4,465)	-11%	Voter Edge travel costs higher in 2015/17
Services/Professional Fees	258,445	165,128	(93,317)	-36%	Voter Edge Implementation costs in 2015/17
Office and Occupancy	167,919	163,477	(4,442)	-3%	Moving office to reduce costs in 2017/19
Total Expenses	\$ 1,038,230	\$ 948,551	(89,679)	-9%	
Net Ordinary Income	\$ 39,727	\$ (148,484)	(188,211)		
Beginning Balance	\$ 399,460	\$ 439,187	\$ 39,727		
Ending Balance	\$ 439,187	\$ 290,703	\$ (148,484)		
Ending Balance Components					
Temporarily Restricted	\$ 400,178	\$ 35,248	\$ (364,930)		
Board Designated Funds	\$ 39,009	\$ 39,009	\$ -		
Operational Reserves	\$ -	\$ 156,000	\$ 156,000		
Undesignated Funds	\$ -	\$ 62,446	\$ 62,446		

Proposed Budget 2017-2019

Motion 301

I move adoption of the 2017-2019 LWVC budget as it appears on pages 81 through 83 of the Convention Workbook.

Joanne Leavitt
LWVC 2nd Vice President
LWV Santa Monica



Operational Reserves Campaign

Supporting Levels:

\$50 - Community Engager

\$100 - Democracy Fighter

\$250 - Strategic Planner

\$1,000 - 21st Century Visionary Partner

*Keeping the League Flourishing
For Generations To Come!*



Budget Discussion & Debate



Budget Discussion & Debate

Motion 301

I move adoption of the 2017-2019 LWVC budget as it appears on pages 81 through 83 of the Convention Workbook.



Bylaws Discussion & Debate



Bylaws Discussion & Debate

Motion 201

I move to adopt the revision of the LWVC bylaws, as shown on Pages 86 through 96 of the Convention Workbook.



Program Discussion & Debate



Program Discussion & Debate

- Motions on not recommended items
 - Recommended program
 - Retain current positions
 - Issues for Education & Advocacy
 - Making Democracy Work
 - Natural resources
 - Response to changing federal policies
 - Not recommended items
-



Program Motions

Not recommended items



Program Discussion & Debate

- Recommended items:
 - Retain current positions
 - Issues for Education & Advocacy
 - Making Democracy Work
 - Natural Resources
 - Response to changing federal policies
- Not Recommended items



Program Discussion & Debate

Retain current positions



Program Discussion & Debate

Issues for Education & Advocacy

Making Democracy Work



Program Discussion & Debate

Issues for Education & Advocacy

Natural Resources



Program Discussion & Debate

Issues for Education & Advocacy

Response to changing federal policies



Program Discussion & Debate

Not recommended items



Announcements

**Caroline de
Llamas**

LWVC Secretary

LWV East San Gabriel
Valley



Non Partisanship Discussion



League of Women Voters® of California



Recess until 2:00 pm

12:45 pm: Nominee “Meet & Greet”
In the Tofanelli Room

